

Next generation stair moulds

Construx is 16 years in the precast business, but since the start they have been a forerunner. At the bauma show, the Construx team presented their new catalogue, 288 pages of precast moulds and formwork for civil engineering, all of which engineered and produced in house. Preparing a catalogue like this every 3 year is a big effort but also a great opportunity, to see a company's evolution. Over the last 3 years the turnover increased with more than 50%. The core business is still the same although the products are evolving all the time.

Construx is a forerunner in the concrete industry which generates great opportunities in discovering new methods, new processes and new technologies. The catalogue shows an important evolution over the last 3 years. "Shaping the Future of Concrete" is still the baseline and the best definition of what Construx does, but the way of doing things changed from ingenious mechanical concepts to complex electromechanical design and advanced automation, with a greater focus on health and safety.

The Construx Flexcaster 2.0, top innovation presented at bauma 2019

As an example of being forerunners in the precast industry, Construx showed the next generation stair moulds at the bauma show. The Construx portfolio has a wide range of intelligent stair moulds, suitable for different purposes, all with fully adjustable risers and goings:

- **Combicaster**
for winding stairs and special shapes
- **Flexcaster**
to cast stairs horizontally, top-down
- **Sidescaster**
to cast stairs on their side
- **Upcaster**
to cast stairs on a ramp, upright

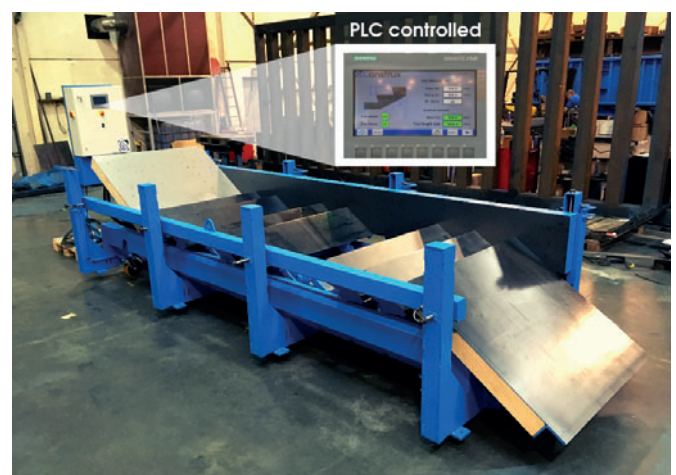
The type of steps can be straight, with a cut-back or with a cut-back and a nose, and all moulds can be made in widths up to 4m. Top and bottom landings are custom-made in a wide variation of lengths and widths. The Flexcaster and the Sidescaster are semi-automated moulds with an ingenious system of combined synchronized adjusting and positioning of all risers and goings, in one single action. The top and bottom landings



At the bauma show, the Construx team presented their new catalogue.

can be adjusted by means of a synchronized spindle system. The above actions made it possible to change the type of stairs in less than 15 minutes, but it required measuring skills and the correct sequence in operating the moulds.

Recently, customers started inquiring about a fool-proof version of the Flexcaster and the Sidescaster. Construx succeeded to do so with its Flexcaster 2.0, a mould to cast stairs with top and bottom landings horizontally, with all adjustments fully



Construx Flexcaster 2.0

automated and controlled by means of a PLC. The operator uses a touchscreen to enter the riser and the going. Consequently, the PLC checks all safety sensors whether the mould is ready to be set, after which, the landings as well all the steps are adjusted according to the instructions of the operator.

It takes only 3 minutes to complete a full cycle with nothing left to measure and the mould ready for use. Other advantages of using a PLC are the higher safety and quality standards and the maintenance made a lot handier. A cleaning button sets the mould in its outer position, which makes it easy to clean the mould. Several sensors check if the side-form and pressure beam are fully closed and a visual control on the screen shows at what angle the top and bottom landings are set. This makes it easy to verify plans and design data, without the need for extra measuring equipment. The Flex-caster is just 1 example of Construx' next generation precast moulds. All moulds are tending towards fool-proof, safe, labour-friendly and ergonomic design, and Construx knows how to deal with that.

Construx, more than precast moulds

Construx has 4 main product groups:

Precast Moulds and Machinery

Construx wants to be the preferential partner of all precast companies for their moulds and other formwork devices. Construx wants to install state of the art precast facilities and perfect fit made to measure moulds. They aim to build the prefabrication plants of the future.



Precast Moulds and Machinery



Precast Moulds & On-Site Formwork



Shaping the Future of Concrete

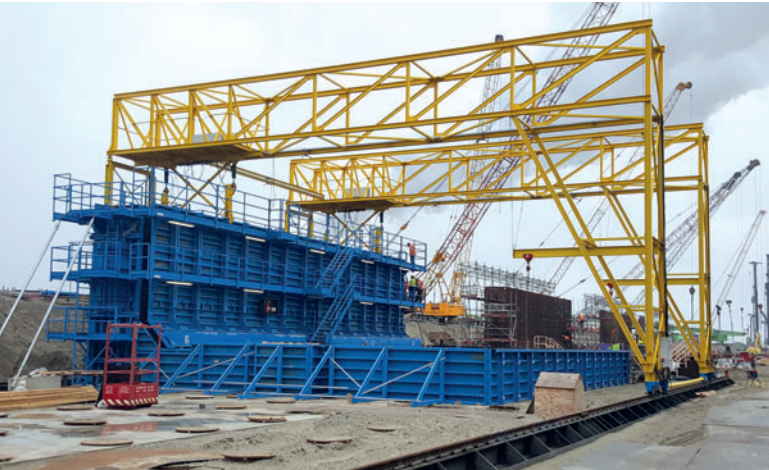
Hulste (B)
Genk (B)
Roeselare (B)
Boortmeerbeek (B)
Veenendaal (NL)
Bucharest (RO)

Hazebeekstraat 11
Hulste, Belgium
+32 56 72 47 93
info@construx.eu



Formwork for Civil Engineering

Construx wants to support contractors and architects in realising all their civil engineering and infrastructure projects by supplying accurate solutions. They want to use our knowledge and skills to design an appropriate formwork for each individual project.



Formwork for Civil Engineering

Tools and Equipment

Construx wants to provide specialised complementary gear for all types of formwork projects. Every piece of equipment is conceived, manufactured and tested in house.



Tools and Equipment

Shuttering and Scaffolding

Construx wants to be the n°1 supplier for on-site concrete jobs, with their 3 modular shuttering systems as well as with their circular shutters, column forms and scaffolds. In both rental and sales, they want to offer our customers a service based on quality and efficiency.



Shuttering and Scaffolding

Construx worldwide

Projects completed in almost 40 countries: e.g. Belgium, Luxembourg, The Netherlands, France, Germany, United Kingdom, Ireland, Northern-Ireland, Switzerland, Austria, Norway, Sweden, Denmark, Iceland, Poland, Portugal, Romania, Turkmenistan, India, Sri Lanka, Morocco, Congo, Nigeria, Ghana,

Angola, Hungary, Saudi-Arabia, Canada, Equatorial-Guinea, Réunion, Curacao, Russia, Lithuania, Algeria, New-Zeeland, Australia, Tasmania, ...



Anthony Jannes and Ward Demyttenaere,
Managing Directors, Construx b.v.b.a.

Some facts and figures about Construx

- 23,5 million EUR consolidated turnover in 2018
- 10,5 million EUR invested in 3 years' time (2016, 2017 and 2018)
- 7 locations in Belgium, The Netherlands and Romania
- 69000m² total site surface area
- 2000m² total offices + production surface area
- 26 overhead cranes and 62 welding units
- 45000m² shuttering panels in rental
- 1,7 million kg steel processed annually
- Over 120 employees in all companies
- 18 CAD-workstations
- All design in 3D
- In-house production of all projects
- Catalogue in 6 languages (Dutch, French, English, German, Polish and Romanian)
- Exhibiting in more than 10 countries
- More than 10000 magnets produced each year

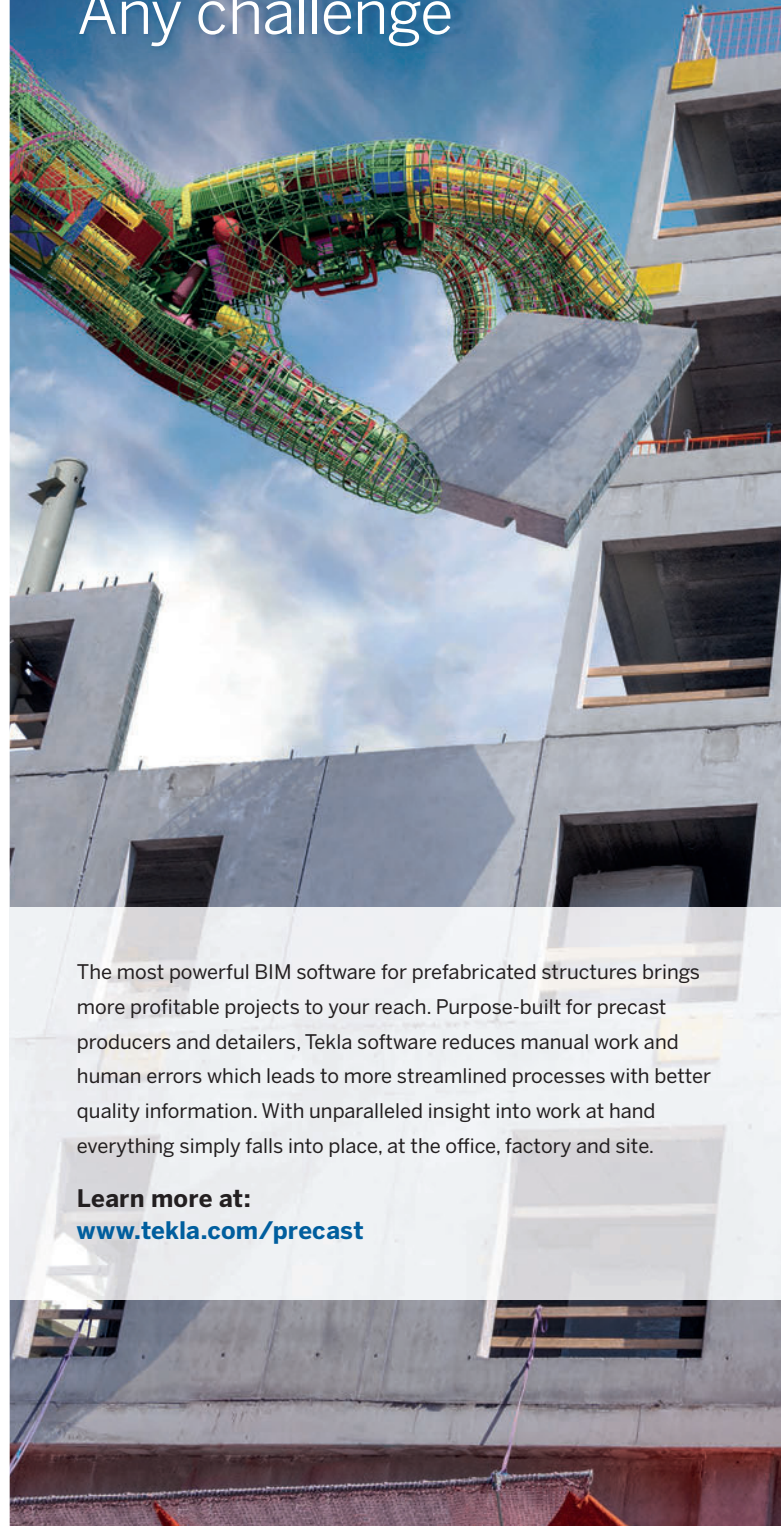
FURTHER INFORMATION



Construx b.v.b.a.
Hazebeekstraat 11, 8531 Hulste, Belgium
T +32 56 72 47 93, F +32 56 71 86 61
info@construx.be, www.construx.be

Perfectly Pieced Together

Any precast,
Any challenge



The most powerful BIM software for prefabricated structures brings more profitable projects to your reach. Purpose-built for precast producers and detailers, Tekla software reduces manual work and human errors which leads to more streamlined processes with better quality information. With unparalleled insight into work at hand everything simply falls into place, at the office, factory and site.

Learn more at:
www.tekla.com/precast